



Special Use Permit Application Form

Montgomery County, Virginia

755 Roanoke St. Suite 2A, Christiansburg, VA 24073
540-394-2148 | mcplan@montgomerycountyva.gov

Applicant Information: (PLEASE PRINT – if additional owners, please attach additional sheets)

Owner of Record (attach separate page for add'l owners): Montgomery County Board of Supervisors	Address: 755 Roanoke Street Suite 1E, Christiansburg VA 24073
Telephone: 540-382-6954	Email:

Applicant Name: Owner Contract Purchaser/Lessee Craig Meadows, County Administrator	Address: 755 Roanoke Street Suite 1E, Christiansburg VA 24073
Telephone: 540-382-6954	Email:

Representative Name and Company:	Address:
Telephone:	Email:

Property Description:

Location or Address: <i>(Describe in relation to nearest intersection)</i> Creed Fields Park at 4390 Riffe Street, Elliston		
Parcel ID Number(s): 070694	Acreage: 14.366	Existing Zoning: Agricultural
Comprehensive Plan Designation: Village Expansion	Existing Use: Park	

Description of Request: (Please provide additional information on attached sheet if necessary)

Proposed Use(s) including acreage: Park, Lighted - Add lights to ball fields

I certify that the information supplied on this application and on the attachments provided (maps or other information) is accurate and true to the best of my knowledge. In addition, I hereby grant permission to the agents and employees of Montgomery County and State of Virginia to enter the above property for the purposes of processing and reviewing the above application.

If signing on behalf of a Corporation, Partnership, or LLC, please specify your title with the entity and provide

documentation clarifying your authority to sign on behalf of the entity.

DocuSigned by: F. Craig Meadows <small>02FE71D3869945A...</small>	County Administrator 11/17/2022
Owner 1 Signature	Date
Owner 2 Signature <i>(for add'l owners please attach separate sheet)</i>	Date
Applicant Signature	Date
Representative/Agent Signature	Date

Montgomery County Creed Park

Christiansburg, VA

Lighting System

Pole / Fixture Summary						
Pole ID	Pole Height	Mtg Height	Fixture Qty	Luminaire Type	Load	Circuit
A1	60'	60'	1	TLC-LED-1200	1.17 kW	B
		60'	2	TLC-LED-900	1.78 kW	B
		16'	1	TLC-BT-575	0.58 kW	B
A2	70'	70'	1	TLC-LED-1200	1.17 kW	B
		70'	1	TLC-LED-1200	1.17 kW	C
		70'	2	TLC-LED-900	1.78 kW	B
		70'	2	TLC-LED-900	1.78 kW	C
		16'	1	TLC-BT-575	0.58 kW	B
		16'	1	TLC-BT-575	0.58 kW	C
A3	60'	60'	1	TLC-LED-1200	1.17 kW	C
		60'	2	TLC-LED-900	1.78 kW	C
		16'	1	TLC-BT-575	0.58 kW	C
B1	60'	60'	2	TLC-LED-1200	2.34 kW	B
		60'	2	TLC-LED-900	1.78 kW	B
		16'	1	TLC-BT-575	0.58 kW	B
B2	70'	70'	2	TLC-LED-1200	2.34 kW	B
		70'	2	TLC-LED-900	1.78 kW	B
		16'	1	TLC-BT-575	0.58 kW	B
		70'	2	TLC-LED-1200	2.34 kW	C
		70'	2	TLC-LED-900	1.78 kW	C
		16'	1	TLC-BT-575	0.58 kW	C
B3	60'	60'	2	TLC-LED-1200	2.34 kW	C
		60'	2	TLC-LED-900	1.78 kW	C
		16'	1	TLC-BT-575	0.58 kW	C
C1-C2	60'	60'	2	TLC-LED-1200	2.34 kW	B
		60'	1	TLC-LED-900	0.89 kW	B
		16'	1	TLC-BT-575	0.58 kW	B
C3-C4	60'	60'	2	TLC-LED-1200	2.34 kW	C
		60'	1	TLC-LED-900	0.89 kW	C
		16'	1	TLC-BT-575	0.58 kW	C
S1-S4	70'	70'	2	TLC-LED-1200	2.34 kW	A
		70'	3	TLC-LED-1500	4.29 kW	A
		70'	1	TLC-LED-900	0.89 kW	A
14			76		78.18 kW	

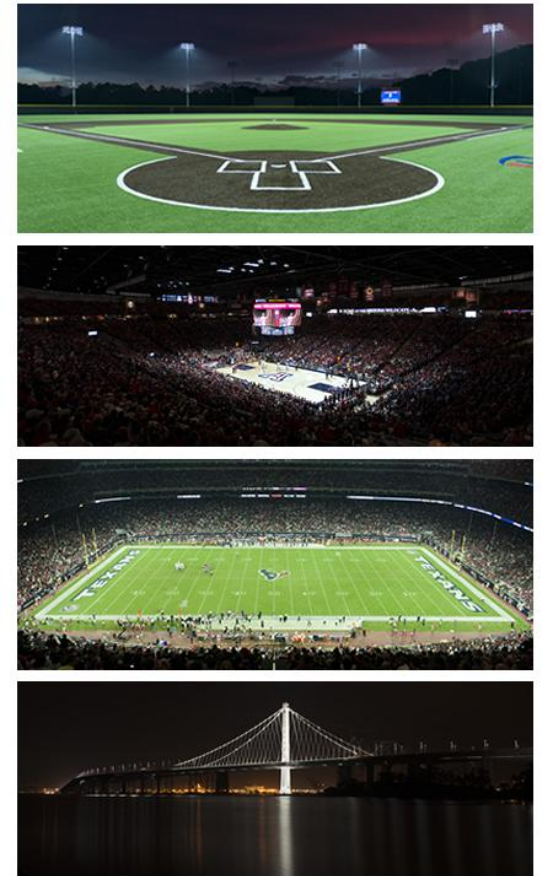
Circuit Summary			
Circuit	Description	Load	Fixture Qty
A	Multipurpose	30.08 kW	24
B	Softball 1	24.05 kW	26
C	Softball 2	24.05 kW	26

Fixture Type Summary							
Type	Source	Wattage	Lumens	L90	L80	L70	Quantity
TLC-LED-1200	LED 5700K - 75 CRI	1170W	136,000	>120,000	>120,000	>120,000	28
TLC-BT-575	LED 5700K - 75 CRI	575W	52,000	>120,000	>120,000	>120,000	12
TLC-LED-900	LED 5700K - 75 CRI	890W	89,600	>120,000	>120,000	>120,000	24
TLC-LED-1500	LED 5700K - 75 CRI	1430W	160,000	>120,000	>120,000	>120,000	12

Light Level Summary

Calculation Grid Summary								
Grid Name	Calculation Metric	Illumination					Circuits	Fixture Qty
		Ave	Min	Max	Max/Min	Ave/Min		
Blanket Grid	Horizontal	10.1	0	65.7	0.00		A,B,C	76
Multipurpose	Horizontal Illuminance	31.8	22.5	40.5	1.80	1.41	A	24
Softball 1 (Infield)	Horizontal Illuminance	52.5	40.9	68	1.66	1.28	B	26
Softball 1 (Outfield)	Horizontal Illuminance	33.1	23	43.5	1.89	1.44	B	26
Softball 2 (Infield)	Horizontal Illuminance	50.5	39.4	66.1	1.68	1.28	C	26
Softball 2 (Outfield)	Horizontal Illuminance	32.9	25.3	44.2	1.75	1.30	C	26

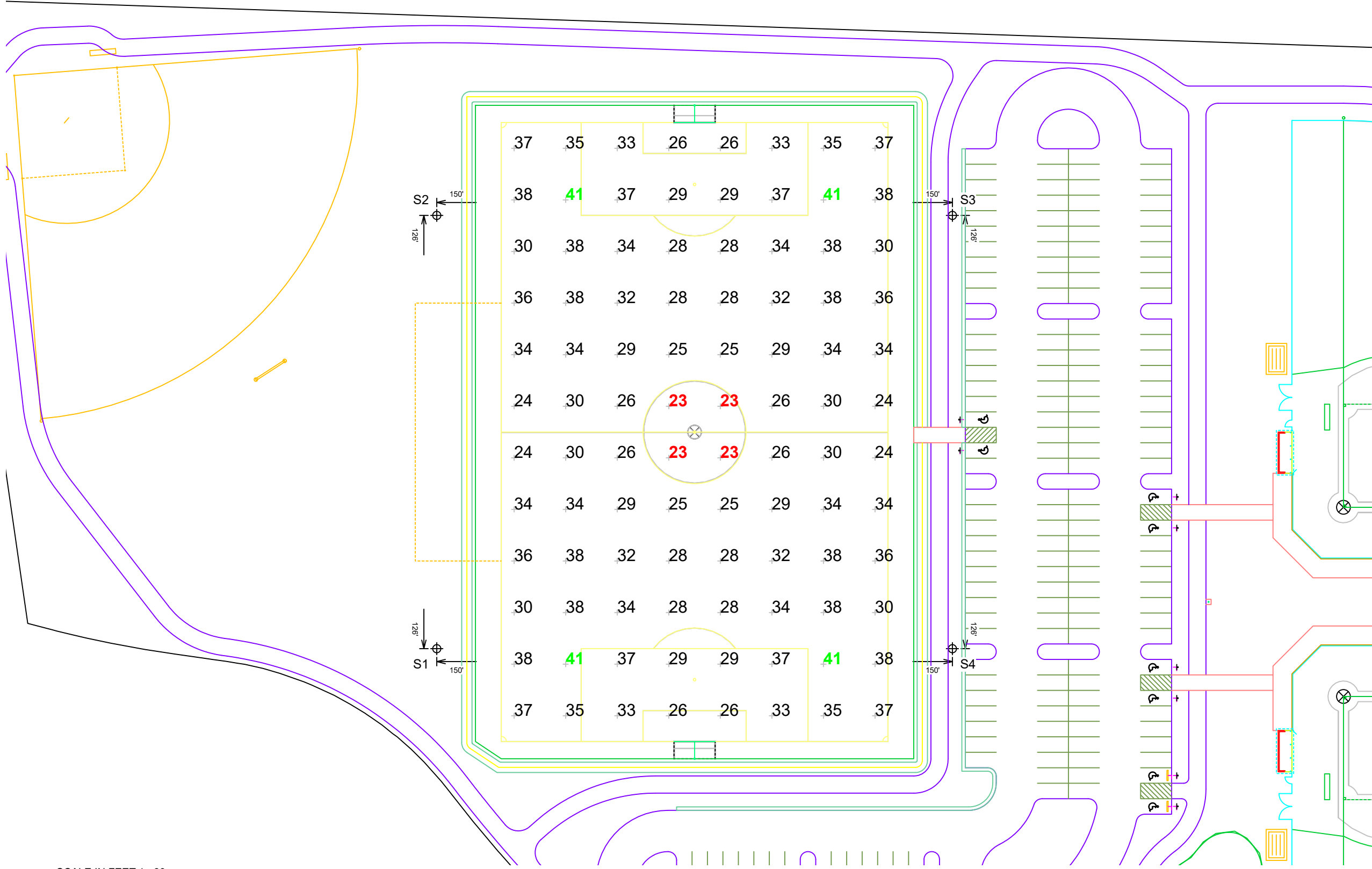
From Hometown to Professional



EQUIPMENT LIST FOR AREAS SHOWN							
Pole				Luminaires			
QTY	LOCATION	SIZE	GRADE ELEVATION	MOUNTING HEIGHT	LUMINAIRE TYPE	QTY / POLE	THIS GRID / OTHER GRIDS
4	S1-S4	70'	-	70'	TLC-LED-1500	3	3 0
				70'	TLC-LED-900	1	1 0
				70'	TLC-LED-1200	2	2 0
4	TOTALS					24	24 0

GRID SUMMARY	
Name:	Multipurpose
Size:	360' x 225'
Spacing:	30.0' x 30.0'
Height:	3.0' above grade

ILLUMINATION SUMMARY	
MAINTAINED HORIZONTAL FOOTCANDLES	
Entire Grid	
Guaranteed Average:	30
Scan Average:	31.83
Maximum:	40.5
Minimum:	22.5
Avg / Min:	1.41
Guaranteed Max / Min:	2.5
Max / Min:	1.80
UG (adjacent pts):	1.41
CU:	0.81
No. of Points:	96
LUMINAIRE INFORMATION	
Applied Circuits:	A
No. of Luminaires:	24
Total Load:	30.08 kW



Guaranteed Performance: The ILLUMINATION described above is guaranteed per your Musco Warranty document and includes a 0.95 dirt depreciation factor.

Field Measurements: Individual field measurements may vary from computer-calculated predictions and should be taken in accordance with IESNA RP-6-15.

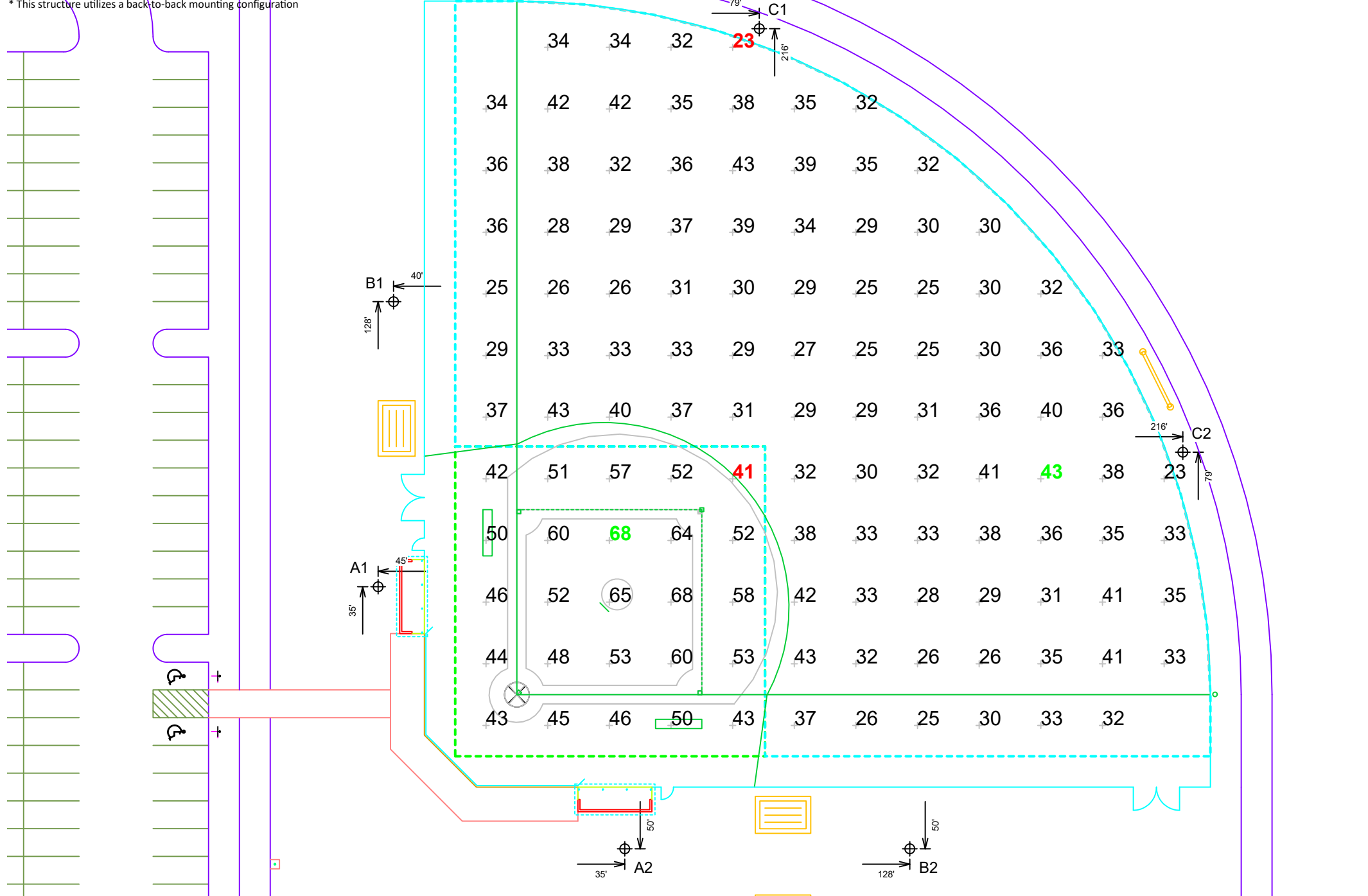
Electrical System Requirements: Refer to Amperage Draw Chart and/or the "Musco Control System Summary" for electrical sizing.

Installation Requirements: Results assume ± 3% nominal voltage at line side of the driver and structures located within 3 feet (1m) of design locations.



EQUIPMENT LIST FOR AREAS SHOWN								
Pole			Luminaires					
QTY	LOCATION	SIZE	GRADE ELEVATION	MOUNTING HEIGHT	LUMINAIRE TYPE	QTY / POLE	THIS GRID	OTHER GRIDS
1	A1	60'	-	60'	TLC-LED-1200	1	1	0
				15.5'	TLC-BT-575	1	1	0
				60'	TLC-LED-900	2	2	0
1	A2	70'	-	70'	TLC-LED-1200	1/1*	1	1
				15.5'	TLC-BT-575	1/1*	1	1
				70'	TLC-LED-900	2/2*	2	2
1	B1	60'	-	60'	TLC-LED-900	2	2	0
				15.5'	TLC-BT-575	1	1	0
				60'	TLC-LED-1200	2	2	0
1	B2	70'	-	70'	TLC-LED-900	2/2*	2	2
				15.5'	TLC-BT-575	1/1*	1	1
				70'	TLC-LED-1200	2/2*	2	2
2	C1-C2	60'	-	60'	TLC-LED-900	1	1	0
				15.5'	TLC-BT-575	1	1	0
				60'	TLC-LED-1200	2	2	0
TOTALS						35	26	9

* This structure utilizes a back-to-back mounting configuration



GRID SUMMARY	
Name:	Softball 1
Size:	225'/225'/225' - basepath 60'
Spacing:	20.0' x 20.0'
Height:	3.0' above grade

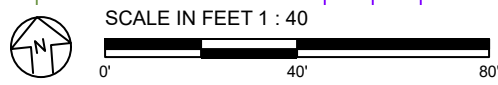
ILLUMINATION SUMMARY		
MAINTAINED HORIZONTAL FOOTCANDLES		
	Infield	Outfield
Guaranteed Average:	50	30
Scan Average:	52.52	33.06
Maximum:	68.0	43.5
Minimum:	40.9	23.0
Avg / Min:	1.29	1.44
Guaranteed Max / Min:	2	2.5
Max / Min:	1.66	1.89
UG (adjacent pts):	1.28	1.66
CU:	0.68	
No. of Points:	25	94
LUMINAIRE INFORMATION		
Applied Circuits:	B	
No. of Luminaires:	26	
Total Load:	24.05 kW	

Guaranteed Performance: The ILLUMINATION described above is guaranteed per your Musco Warranty document and includes a 0.95 dirt depreciation factor.

Field Measurements: Individual field measurements may vary from computer-calculated predictions and should be taken in accordance with IESNA RP-6-15.

Electrical System Requirements: Refer to Amperage Draw Chart and/or the "Musco Control System Summary" for electrical sizing.

Installation Requirements: Results assume ± 3% nominal voltage at line side of the driver and structures located within 3 feet (1m) of design locations.



ENGINEERED DESIGN By: File #203030B · 17-Oct-22

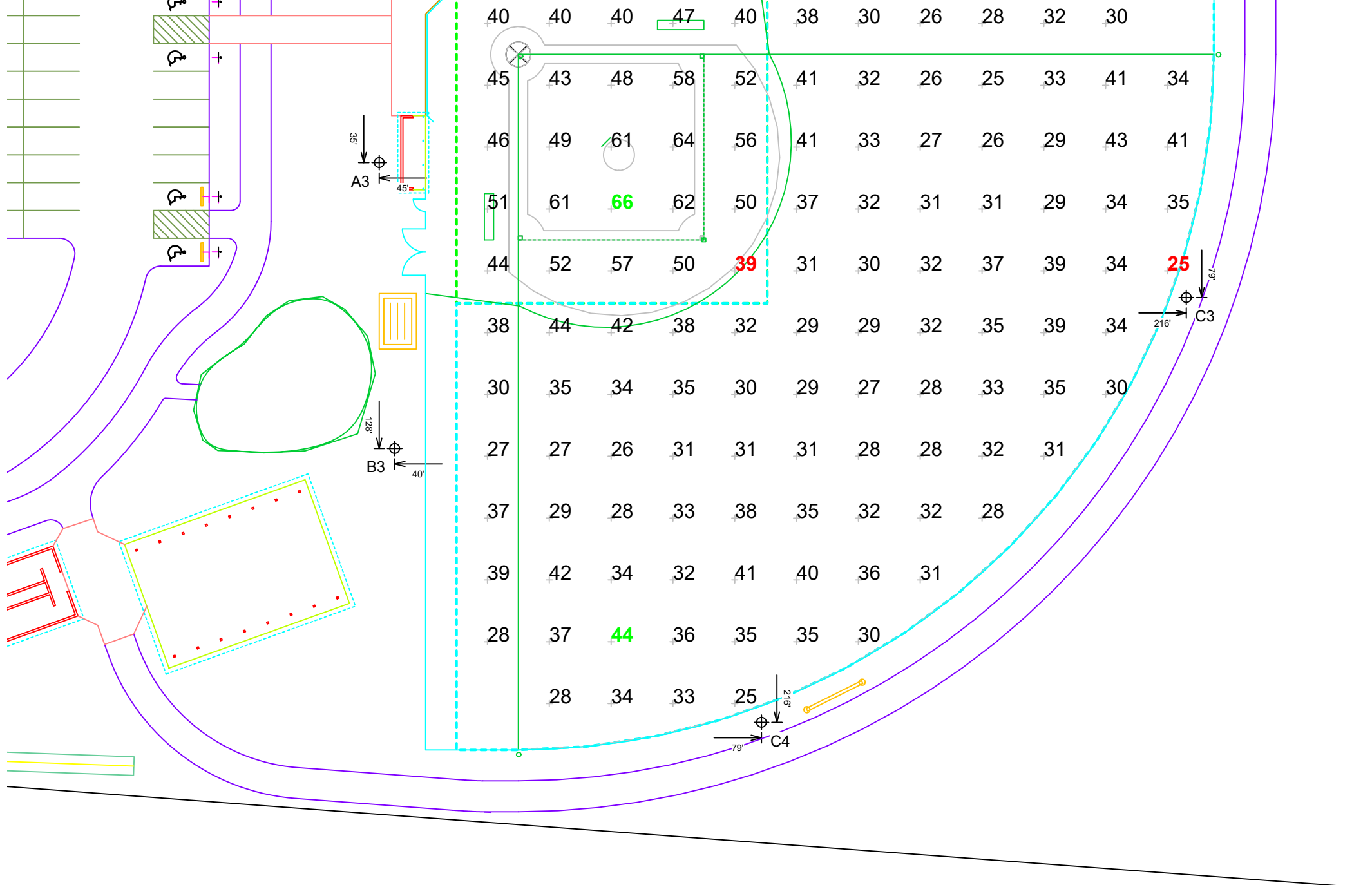
Pole location(s) ⊕ dimensions are relative to 0,0 reference point(s) ⊗



Not to be reproduced in whole or part without the written consent of Musco Sports Lighting, LLC. ©1981, 2022 Musco Sports Lighting, LLC.

EQUIPMENT LIST FOR AREAS SHOWN									
Pole			Luminaires						
QTY	LOCATION	SIZE	GRADE ELEVATION	MOUNTING HEIGHT	LUMINAIRE TYPE	QTY / POLE	THIS GRID	OTHER GRIDS	
1	A2	70'	-	70'	TLC-LED-1200	1/1*	1	1	
				15.5'	TLC-BT-575	1/1*	1	1	
				70'	TLC-LED-900	2/2*	2	2	
1	A3	60'	-	60'	TLC-LED-1200	1	1	0	
				15.5'	TLC-BT-575	1	1	0	
				60'	TLC-LED-900	2	2	0	
1	B2	70'	-	70'	TLC-LED-900	2/2*	2	2	
				15.5'	TLC-BT-575	1/1*	1	1	
				70'	TLC-LED-1200	2/2*	2	2	
1	B3	60'	-	60'	TLC-LED-1200	2	2	0	
				15.5'	TLC-BT-575	1	1	0	
				60'	TLC-LED-900	2	2	0	
2	C3-C4	60'	-	60'	TLC-LED-900	1	1	0	
				15.5'	TLC-BT-575	1	1	0	
				60'	TLC-LED-1200	2	2	0	
6	TOTALS						35	26	9

*This structure utilizes a back-to-back mounting configuration



GRID SUMMARY	
Name:	Softball 2
Size:	225'/225'/225' - basepath 60'
Spacing:	20.0' x 20.0'
Height:	3.0' above grade

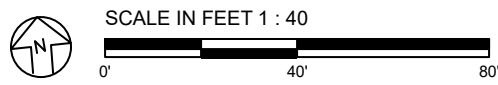
ILLUMINATION SUMMARY		
MAINTAINED HORIZONTAL FOOTCANDLES		
	Infield	Outfield
Guaranteed Average:	50	30
Scan Average:	50.52	32.91
Maximum:	66.1	44.2
Minimum:	39.4	25.3
Avg / Min:	1.28	1.30
Guaranteed Max / Min:	2	2.5
Max / Min:	1.68	1.75
UG (adjacent pts):	1.29	1.46
CU:	0.67	
No. of Points:	25	94
LUMINAIRE INFORMATION		
Applied Circuits:	C	
No. of Luminaires:	26	
Total Load:	24.05 kW	

Guaranteed Performance: The ILLUMINATION described above is guaranteed per your Musco Warranty document and includes a 0.95 dirt depreciation factor.

Field Measurements: Individual field measurements may vary from computer-calculated predictions and should be taken in accordance with IESNA RP-6-15.

Electrical System Requirements: Refer to Amperage Draw Chart and/or the "Musco Control System Summary" for electrical sizing.

Installation Requirements: Results assume ± 3% nominal voltage at line side of the driver and structures located within 3 feet (1m) of design locations.



ENGINEERED DESIGN By: File #203030B · 17-Oct-22

Pole location(s) Ⓢ dimensions are relative to 0,0 reference point(s) ⊗



Not to be reproduced in whole or part without the written consent of Musco Sports Lighting, LLC. ©1981, 2022 Musco Sports Lighting, LLC.

Montgomery County Creed Park
Christiansburg, VA

GRID SUMMARY	
Name:	Blanket Grid
Spacing:	30.0' x 30.0'
Height:	3.0' above grade

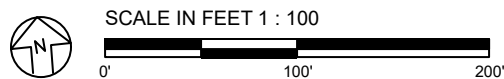
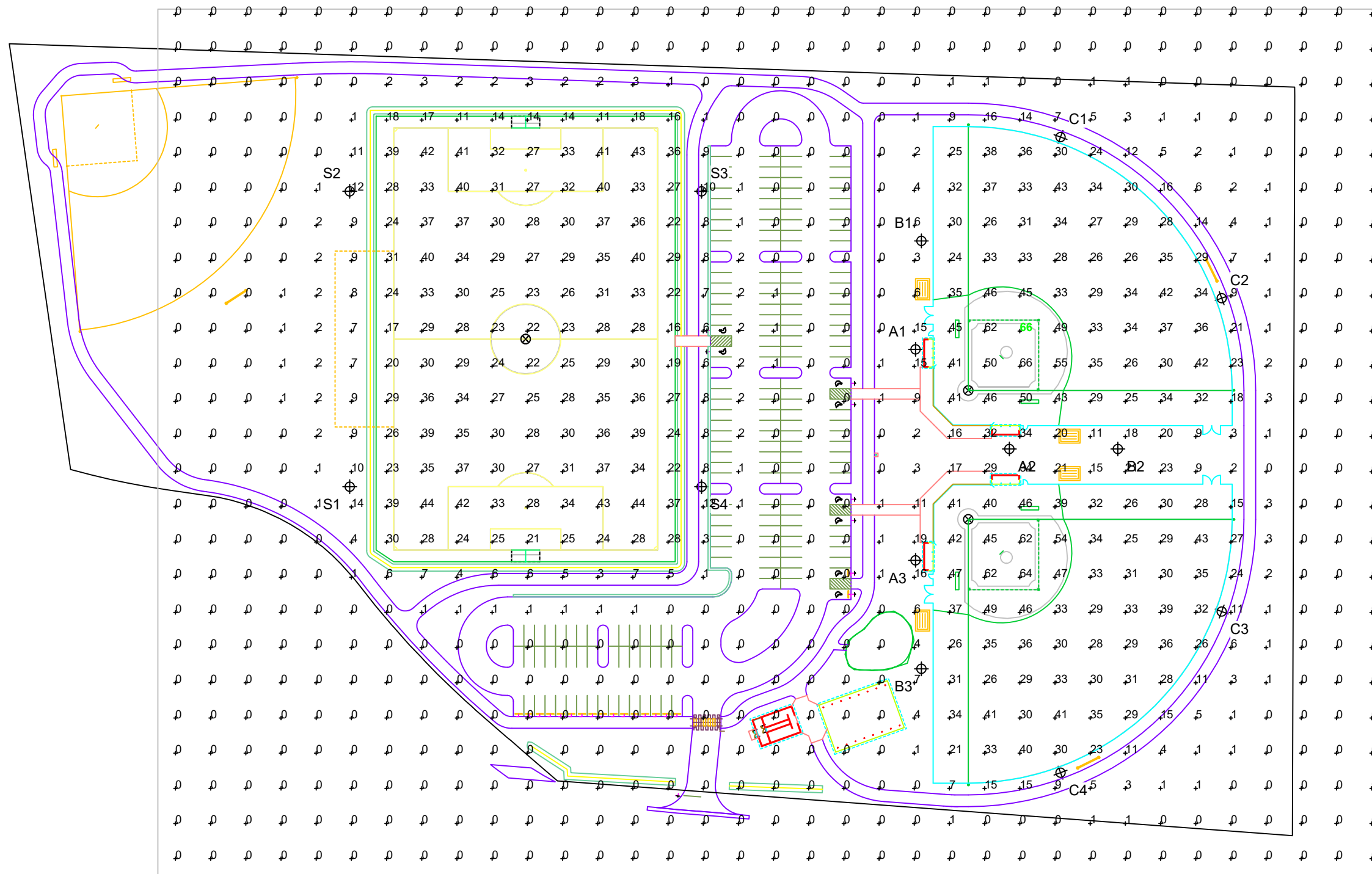
ILLUMINATION SUMMARY	
MAINTAINED HORIZONTAL FOOTCANDLES	
Entire Grid	
Scan Average:	10.11
Maximum:	65.7
Minimum:	0.0
Avg / Min:	-
Max / Min:	-
UG (adjacent pts):	157.67
CU:	0.93
No. of Points:	875
LUMINAIRE INFORMATION	
Applied Circuits:	A, B, C
No. of Luminaires:	76
Total Load:	78.18 kW

Guaranteed Performance: The ILLUMINATION described above is guaranteed per your Musco Warranty document and includes a 0.95 dirt depreciation factor.

Field Measurements: Individual field measurements may vary from computer-calculated predictions and should be taken in accordance with IESNA RP-6-15.

Electrical System Requirements: Refer to Amperage Draw Chart and/or the "Musco Control System Summary" for electrical sizing.

Installation Requirements: Results assume ± 3% nominal voltage at line side of the driver and structures located within 3 feet (1m) of design locations.



ENGINEERED DESIGN By: File #203030B · 17-Oct-22

Pole location(s) ⊕ dimensions are relative to 0,0 reference point(s) ⊗



We Make It Happen.

Not to be reproduced in whole or part without the written consent of Musco Sports Lighting, LLC. ©1981, 2022 Musco Sports Lighting, LLC.

ILLUMINATION SUMMARY

EQUIPMENT LAYOUT

INCLUDES:

- Multipurpose
- Softball 1
- Softball 2

Electrical System Requirements: Refer to Amperage Draw Chart and/or the "Musco Control System Summary" for electrical sizing.

Installation Requirements: Results assume ± 3% nominal voltage at line side of the driver and structures located within 3 feet (1m) of design locations.

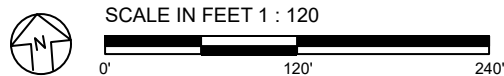
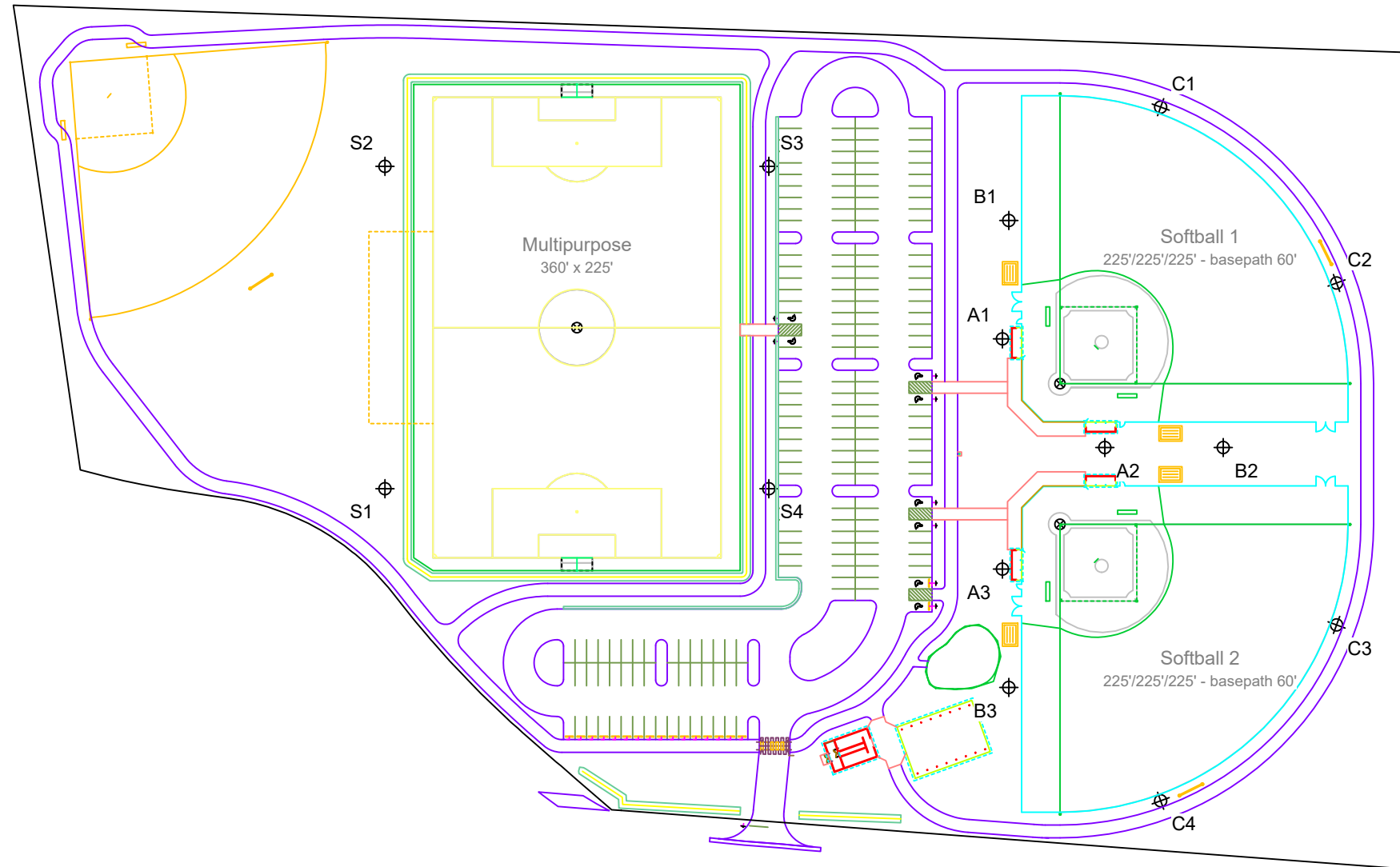
EQUIPMENT LIST FOR AREAS SHOWN

QTY	Pole			Luminaires			
	LOCATION	SIZE	GRADE ELEVATION	MOUNTING HEIGHT	LUMINAIRE TYPE	QTY / POLE	
2	A1, A3	60'	-	60'	TLC-LED-1200	1	
				15.5'	TLC-BT-575	1	
				60'	TLC-LED-900	2	
1	A2	70'	-	70'	TLC-LED-1200	1/1*	
				15.5'	TLC-BT-575	1/1*	
				70'	TLC-LED-900	2/2*	
1	B1	60'	-	60'	TLC-LED-900	2	
				15.5'	TLC-BT-575	1	
				60'	TLC-LED-1200	2	
1	B2	70'	-	70'	TLC-LED-900	2/2*	
				15.5'	TLC-BT-575	1/1*	
				70'	TLC-LED-1200	2/2*	
1	B3	60'	-	60'	TLC-LED-1200	2	
				15.5'	TLC-BT-575	1	
				60'	TLC-LED-900	2	
4	C1-C4	60'	-	60'	TLC-LED-900	1	
				15.5'	TLC-BT-575	1	
				60'	TLC-LED-1200	2	
4	S1-S4	70'	-	70'	TLC-LED-1500	3	
				70'	TLC-LED-900	1	
				70'	TLC-LED-1200	2	
14	TOTALS						76

* This structure utilizes a back-to-back mounting configuration

SINGLE LUMINAIRE AMPERAGE DRAW CHART

Ballast Specifications (.90 min power factor)	Line Amperage Per Luminaire (max draw)						
	208 (60)	220 (60)	240 (60)	277 (60)	347 (60)	380 (60)	480 (60)
TLC-LED-1200	7.0	6.6	6.1	5.2	4.2	4.0	3.0
TLC-BT-575	3.4	3.2	2.9	2.5	2.0	1.8	1.5
TLC-LED-900	5.3	5.0	4.6	4.0	3.2	2.9	2.3
TLC-LED-1500	8.5	8.1	7.4	6.4	5.1	4.7	3.7



ENGINEERED DESIGN By: · File #203030B · 17-Oct-22

Pole location(s) ⊕ dimensions are relative to 0,0 reference point(s) ⊗



We Make It Happen.

Not to be reproduced in whole or part without the written consent of Musco Sports Lighting, LLC. ©1981, 2022 Musco Sports Lighting, LLC.