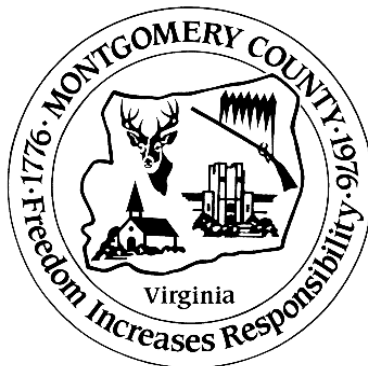
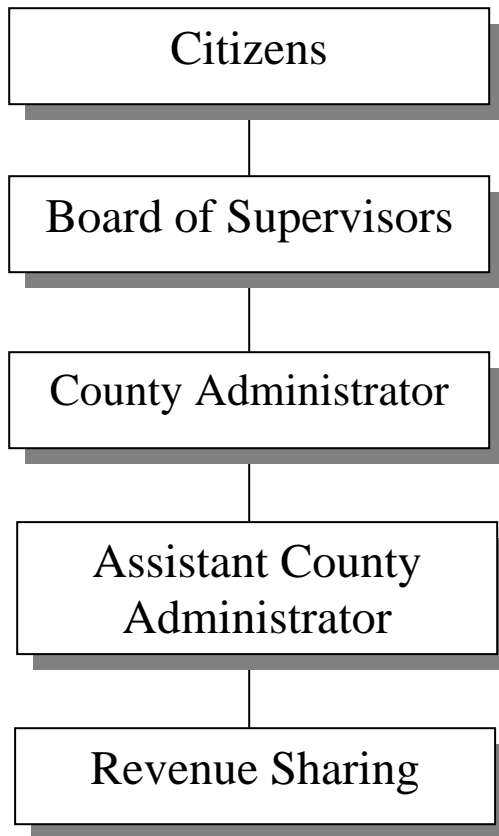


REVENUE SHARING



REVENUE SHARING

Budget Summary

	FY 09 Revised	FY 09 Actual	FY 10 Approved	FY 11 Base	+	FY 11 Addenda	=	FY 11 Recommended	Change App 10/ Rec 11
EXPENDITURES BY DEPARTMENT									
Refunds	\$ 168,297	\$ 159,496	\$ 164,106	\$ 164,106		\$ -		\$ 164,106	\$ -
TOTAL EXPENDITURES	\$ 168,297	\$ 159,496	\$ 164,106	\$ 164,106		\$ -		\$ 164,106	\$ -
REVENUE BY CLASSIFICATION									
Designated Revenue	\$ -	\$ -	\$ -	\$ -		\$ -		\$ -	\$ -
Adjustment for Revenue Refunds	\$ -	\$ -	\$ -	\$ -		\$ -		\$ -	\$ -
TOTAL DESIGNATED REVENUE	\$ -	\$ -	\$ -	\$ -		\$ -		\$ -	\$ -
TOTAL UNDESIGNATED REVENUE	\$ 168,297	\$ 159,496	\$ 164,106	\$ 164,106		\$ -		\$ 164,106	\$ -
TOTAL REVENUES	\$ 168,297	\$ 159,496	\$ 164,106	\$ 164,106		\$ -		\$ 164,106	\$ -

REVENUE SHARING

Division Description

This division is responsible for payments to the City of Radford as part of a revenue sharing agreement between the County and the City. Payments are equal to 27.5% of all revenue collected in the 177 Corridor and are made semi-annually to the City of Radford.

Base Budget Discussion

The base budget is the estimated minimum cost for providing continued services/operations for each division/department. It is based on the prior year approved budget with adjustments. This budget shows how much it would cost in the next fiscal year to operate the same programs approved in the current fiscal year.

- No Notable Base Budget Adjustments

Addenda & Reductions Discussion

Addenda consist of dollars over and above the base budget target for operating and capital. Recommended addenda items are generally for new and/or expanded services/initiatives. Reductions reflect dollars reduced in revenue and/or expense necessary to address a shortfall in the general fund revenue.

- No Addenda Added

REVENUE SHARING

Department Description and Financial Data

Revenue Sharing

This department is responsible for payments to the City of Radford as part of a revenue sharing agreement between the County and the City.

	<u>FY 09</u> <u>Revised</u>	<u>FY 09</u> <u>Actual</u>	<u>FY 10</u> <u>Approved</u>	<u>FY 11</u> <u>Base</u>	+	<u>FY 11</u> <u>Addenda</u>	=	<u>FY 11</u> <u>Recommended</u>	<u>Change</u> <u>App 10/</u> <u>Rec 11</u>
EXPENDITURES BY DEPARTMENT									
Revenue Sharing	\$ 168,297	\$ 159,496	\$ 164,106	\$ 164,106		\$ -		\$ 164,106	\$ -